

EXTREME

By Bailey Morris Ltd

Extreme Double Cardan

- Double Cardan for greater articulation
- Longer spline assembly
- Heavy Duty Universal Joints



Extreme Wide Angle

- Wide Angle Components
- Longer Spline Assembly
- Heavy Duty Universal Joints

Extreme II

- Wide Angle Components
- Larger Heavy Duty UJs
- Suitable for Puma Engine Applications



THE place for Extreme Off-Roading Propshafts



**Bailey
Morris
Limited**

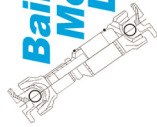
Tel: 0044 (0) 1480 216250

Fax: 0044 (0) 1480 403045

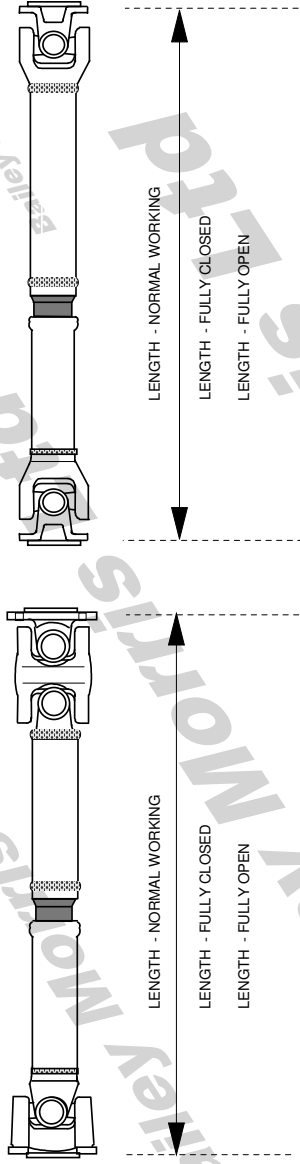
Email: sales@baileymorris.co.uk

www.baileymorris.co.uk

Little End Road, Eaton Socon, St Neots, Cambridgeshire, PE19 8GE



"EXTREME" WIDE ANGLE LANDROVER PROPSHAFT



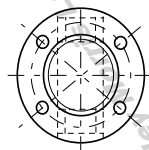
BOTH STYLE OF SHAFTS HAVE UPGRADED CAPACITY UNIVERSAL JOINTS (1310 SERIES APPROX. 15% EXTRA TORQUE LOADING) DOUBLE CARDAN JOINT CAN HAVE GREASABLE JOINTS AND CENTRE PIN CAN BE LUBRICATED

WIDE ANGLE 30°

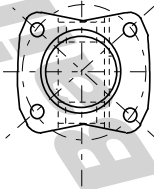
DOUBLE KNUCKLE FLANGE 30°

DOUBLE KNUCKLE FLANGE 30°

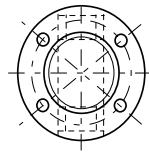
(SAME AS SLIP END)



97MM DIA FLANGE (1310SAE)
WITH 60.3MM DIA. MALE REGISTER AND
4 X 9.8MM BOLT HOLES
ON 79.4MM P.C.D
HOLES NOT EQUALLY SPACED



95MM PCD FLANGE
WITH 65MM DIA. MALE REGISTER AND
4 X 10.3MM BOLT HOLES
HOLES EQUALLY SPACED 67MM X 67MM



97MM DIA FLANGE (1310SAE)
WITH 60.3MM DIA. MALE REGISTER AND
4 X 9.8MM BOLT HOLES
ON 79.4MM P.C.D
HOLES NOT EQUALLY SPACED

PHASING - ZERO DEGREES +/- 1 DEGREE
WELD - MIG

STRAIGHTNESS - 0.10 AXIS X / 0.20 AXIS Y

DYNAMIC IMBALANCE - VD12060 Q16 MAX (ISO 1940) 2500 R.P.M

LANDROVER "EXTREME"